



www.inspirehomeautomation.co.uk

WHAT'S IN THE BOX



TOOLS REQUIRED

Drill + 5mm drill bit

Phillips Screwdriver



INTRODUCTION

The Ignite Smart Sensor will detect temperature, motion and humidity to help improve the efficiency of your heating. This will link into an existing Ignite Heating System.

The Smart Sensor should **not** be installed in areas subject to extended periods of high humidity, e.g. bathrooms.

SPECIFICATIONS

Power Supply:

2 x AAA Alkaline Batteries

Temperature Range:

0 - 40°C

Humidity Range:

0 - 100% Rh

Motion Sensing Range:

70°@ 5 Metres - Horizontal

20°@ 5 Metres - Vertical

Radio Frequency:

868 MHz

Dimensions:

68 x 68 x 23mm

RADIO SIGNAL

When choosing a location for your Smart Sensor, consider the radio signal path. The signal will travel between units in a straight line and will degrade both with distance and (much more importantly) objects that it has to pass through.

The Smart Sensor needs to connect to the Relay Module (Ignite Wireless) or Thermostat (Ignite Wired) via its internal low power radio.

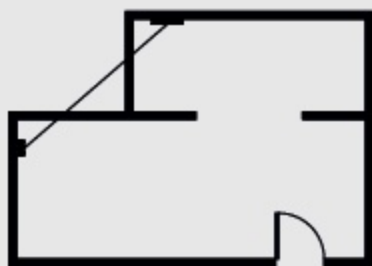
Every house is different and this is NOT a guarantee, but as a guide, the units should be able to communicate with each other through two single skin brick or stud walls.

If the above is not possible, consider moving one or more of the system components.

Also, the radio can be adversely affected by large metal objects such as your boiler, radiators and mirrors. For best performance, ensure that your units are placed at least 1 metre away from such objects.

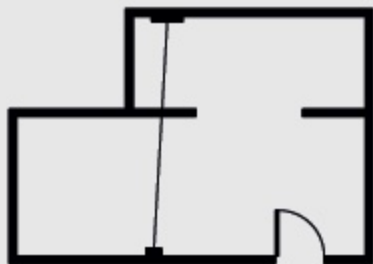
BAD POSITIONING

The image below shows the path that the signal will travel to communicate between the Relay Module and Smart Sensor. This is an example of a badly positioned item as the signal travels between two external walls.



GOOD POSITIONING

By moving the Smart Sensor to a different wall, the signal now only needs to travel through a single internal wall.



BATTERY INSTALLATION

We recommend that you pair the Smart Sensor with your Ignite System prior to fixing it to the wall.

1. Whilst holding the back plate, rotate outer cover anticlockwise and remove in direction shown below



2. Fit supplied batteries



3. Secure outer cover by following Step 1 in reverse

PAIRING INSTRUCTIONS

Put the Ignite device into pairing mode as detailed below.

Ignite Wired

Press and hold 'CH MODE' and 'BOOST CH' keys together on the Room Thermostat until C5 is displayed.

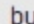
Ignite Wireless

Short press the pairing (middle) button on the Relay Module, this will make all three lights flash green. Then press the appropriate button (CH) to pair the central heating channel to the Smart Sensor, this will start the button flashing.

Ignite Wireless (3ch-2, 3ch)

Long press the two outside buttons on the Relay Module, this will make all three lights flash green. Then press the appropriate button (CH) to pair the central heating channel to the Smart Sensor, this will start the light flashing.

Smart Sensor


Press and hold  button for 5 seconds. All 5 LED's will slowly flash to indicate unit is in pairing mode.

Upon successful pairing, the centre LED on the Smart Sensor will rapidly flash.

If pairing fails, the two outside LED's will rapidly flash. Please try the pairing procedure again

TESTING THE SYSTEM

Ideally, the Smart Sensor should be positioned at a height of 1.0 - 1.5 metres and in a high traffic area.

Hold the Smart Sensor in your desired location. Press and hold  arrow button for 5 seconds. The Ignite Smart Sensor will enter into a signal strength testing mode.

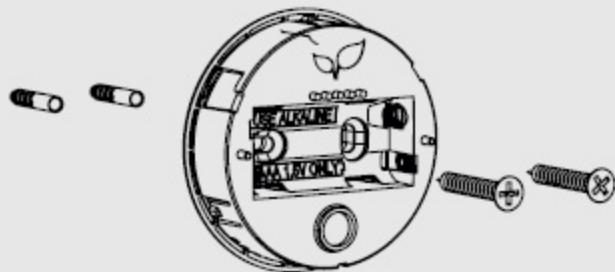
A sweeping LED will be displayed whilst the signal detection is in progress.

If a signal is detected, the strength will be measured from 1 – 5 by lighting LEDs accordingly. To work effectively, the signal should be a minimum of two LEDs.

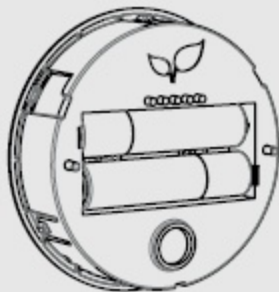
If the unit has not been paired, two outside LEDs will rapidly flash. Please return to pairing instructions on previous page and follow the appropriate steps to pair the Smart Sensor.

INSTALLATION INSTRUCTIONS

4. Remove outer cover by repeating step 1
5. Remove batteries, hold the device in the desired position and mark screw mounting positions
6. Drill holes and locate supplied wall plugs

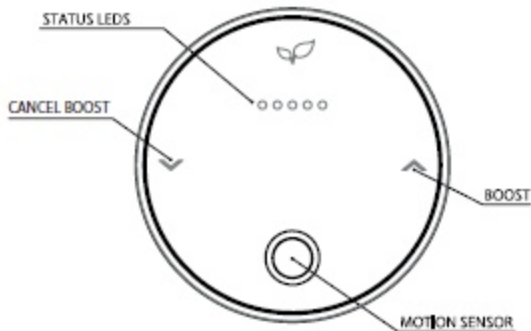


7. Mount the device using supplied screws
8. Fit batteries



9. Secure outer cover by following Step 1 in reverse

USING THE SYSTEM



Login to your account to view and configure your new Smart Sensor.

If you are adding multiple Smart Sensors to the same Ignite System, name each unit online, before pairing subsequent devices.